



Christel Sadde

PARIS

COLLECTION 2025

The standing sculptures

"I create sculptures but
I don't sculpt,
I build."

Christel Sadde creates sculptures in movement. Trained as a graphic designer and inspired by geometric abstraction and kinetic art, she has been developing her research for more than 20 years around the representation of a poetic and aerial lightness.

Through her large suspended mobile sculptures that come to life with air and light, Christel manages to defy the laws of weightlessness by making shapes and lines dance in space.

In order to create a strong poetic impact, Christel Sadde creates only large mobiles whose volume she adapts to the architecture of a place. All over the world, luxury brands, architects and individuals call upon her creativity.

In addition to her custom-made hanging sculptures, Christel Sadde also creates very limited edition sculptures on base. While she mainly uses aluminum and steel to build her large mobiles, Christel Sadde also uses stainless steel, brass and wood in the making of her standing sculptures.

Since 2020, she opens her field of creation to artists' jewelry, to painting and to a more raw, freer sculpture.

Christel Sadde lives between Paris and Nièvre where she has anchored her studio since March 2023.

Christel Sadde is a member of the Maison des Artistes and the Ateliers d'Art de France.

THE STANDING MOBILES XXL



<https://www.christelsadde.com/en/projet/stabile-i-fly-away/>

Reference : GS_2
I Fly Away

Edition : 8 pieces signed and numbered

Sizes : L 1.5 m (59 in.) x l 50 cm (20 in.)
x h 1 m (39 in.)

Materials : base in varnished brass, stainless
steel rods, shapes in aluminum mirror

Weight : 5.4 kgs (12 lbs)



Reference : GS_3
4 Branches Tree

Edition : Unique Piece signed and numbered

Sizes : L 1.5 m (59 in.) x l 1.5 m (59 in.)
x h 1 m (39 in.)

Materials : base in varnished brass, stainless
steel rods, shapes in aluminum mirror

Weight : 5.8 kgs (13 lbs)

<https://www.christelsadde.com/en/projet/stabile-4-branches-tree/>





Reference : GS_1
I Dance

Edition : 8 pieces signed and numbered

Sizes : L 1.5 m (59 in.) x l 50 cm (20 in.) x
 h 1 m (39 in.)

Materials : base in varnished brass, stainless
 steel rods, shapes in aluminum mirror

Weight : 5.4 kgs (12 lbs)

<https://www.christelsadde.com/en/projet/stabile-i-dance/>



<https://www.christelsadde.com/en/projet/tribute-to-victor-vasarely/>

Reference : SV1-17
Tribute to Victor VASARELY - XXL version

Edition : 8 pieces signed and numbered

Sizes : square frame 50 cm (20 in.)
 base 17 cm (7 in.)

Materials : polished varnished brass + glass

Weight : 6,3 kgs (14 lbs)



THE STABILE SERIES

<https://www.christelsadde.com/en/projet/the-series-of-tribute-to/>



STABILE, Tribute to K. Malevitch

Kasimir MALEVITCH, russian artist (1878-1935)

Reference : S5-14 (gold) & S6-14 (palladium)

Edition : 8 pieces signed and numbered

Sizes : diameter 25 cm x height 30 cm
(9.8/11.8 in.)

Weight : 540 grs (1,19 lbs)
Materials : polished varnished brass, gold or
palladium plated

STABILE, Tribute to V. Vasarely

Victor VASARELY, french artist (1906-1997)

Reference : S7-14 (gold) & S8-14 (palladium)

Edition : 8 pieces signed and numbered

Sizes : diameter 25 cm x height 30 cm
(9.8/11.8 in.)

Weight : 850 grs - 1,87 lbs
Materials : polished varnished brass,
gold or palladium plated



STABILE, Tribute to V. Kandinsky

Vassily KANDINSKY, russian artist (1866-1944)

Reference : S3-14 (gold) & S4-14 (palladium)

Edition : 8 pieces signed and numbered

Sizes : diameter 25 cm x height 30 cm
(9.8/11.8 in.)

Weight : 600 grs (1,32 lbs)
Materials : polished varnished brass, gold and
palladium plated

STABILE, Tribute to F. Morellet

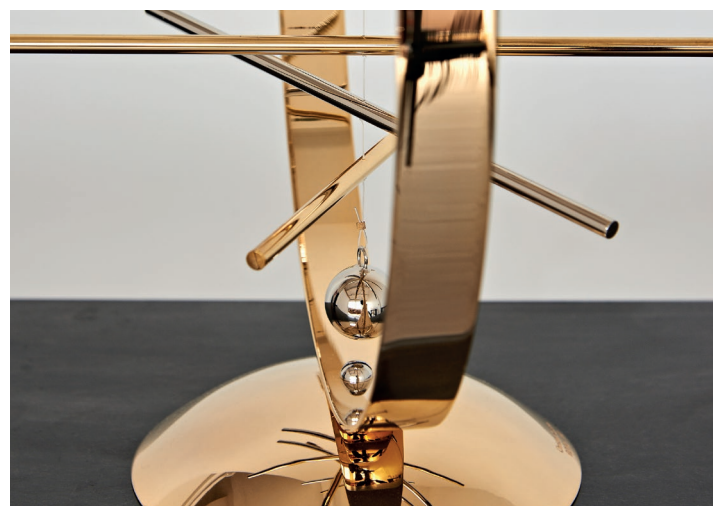
François MORELLET, french artist (1926-2016)

Reference : S9-14 (gold) & S10-14 (palladium)

Edition : 8 pieces signed and numbered

Sizes : diameter 25 cm x height 30 cm
(9.8/11.8 in.)

Weight : 750 grs (1,65 lbs)
Materials : polished varnished brass,
gold and palladium plated



THE FOUR SEASONS



<http://christelsadde.com/en/collection-2/spring-or-the-weight-of-my-cares-is-beginning-to-lift/>

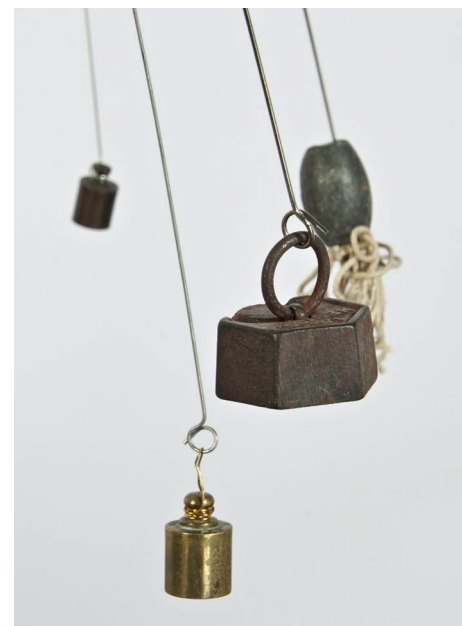
Reference : SPR-20
Spring or
The weight of my cares is beginning to lift

Edition : 8 pieces signed and numbered

Sizes : The base: length 75 cm (29.5 in.) / width 10 cm (3.9 in.).
 Total height 50 cm (19.6 in.)

Materials : oak + polish brass + stainless steel

Weight : 5 kgs (11 lbs)



<https://www.christelsadde.com/en/projet/summer-or-the-tree-of-life/>

Reference : SUM-20
Summer or The Tree of Life

Edition : 8 pieces signed and numbered

Sizes : The base: diameter 12 cm (4.7 in.).
 The mobile : diameter 90 cm (35.4 in.) / Height 92 cm (36 in.)

Materials : matt varnished brass + stainless steel rods

Weight : 2.5 kgs (5.5 lbs)

THE FOUR SEASONS



Reference : AUT-20
Autumn or I give myself over to winter

Edition : 8 pieces signed and numbered

Sizes : The base: length 75 cm (29.5 in.)/
width 6 cm (2.4 in.)
Height of the rods 70 cm (27.5 inches)

Materials : The base is in oak + polish brass
The rods are in plated gold steel +
brilliant stainless steel

Weight : 2.7 kgs (5,9 lbs)



<http://christelsadde.com/en/collection-2/autumn-or-i-give-myself-over-to-winter/>



Reference : WIN_20
Winter or The Sleeping Tree

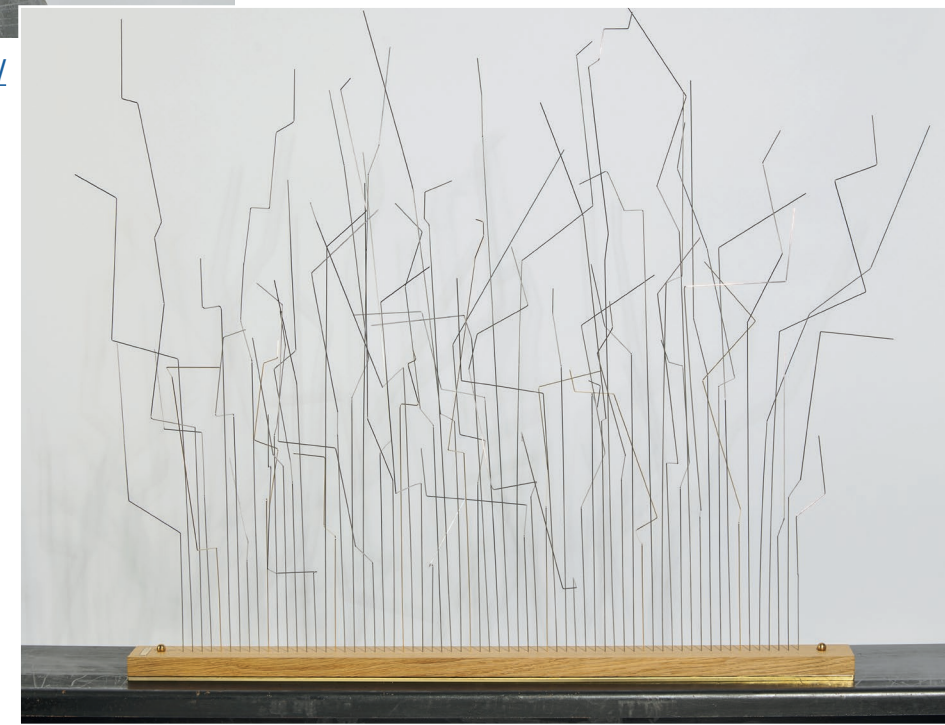
Edition : 8 pieces signed and numbered

Sizes : The base: length 75 cm (29.5 in.)/width 6 cm (2.4 in.)
Height of the rods:
70 cm (27.5 inches)

Materials : The base is in oak + polish brass
The rods are in plated gold steel
+ brilliant stainless steel

Weight : 2.7 kgs (5.9 lbs)

<http://christelsadde.com/en/collection-2/winter-or-the-sleeping-tree/>

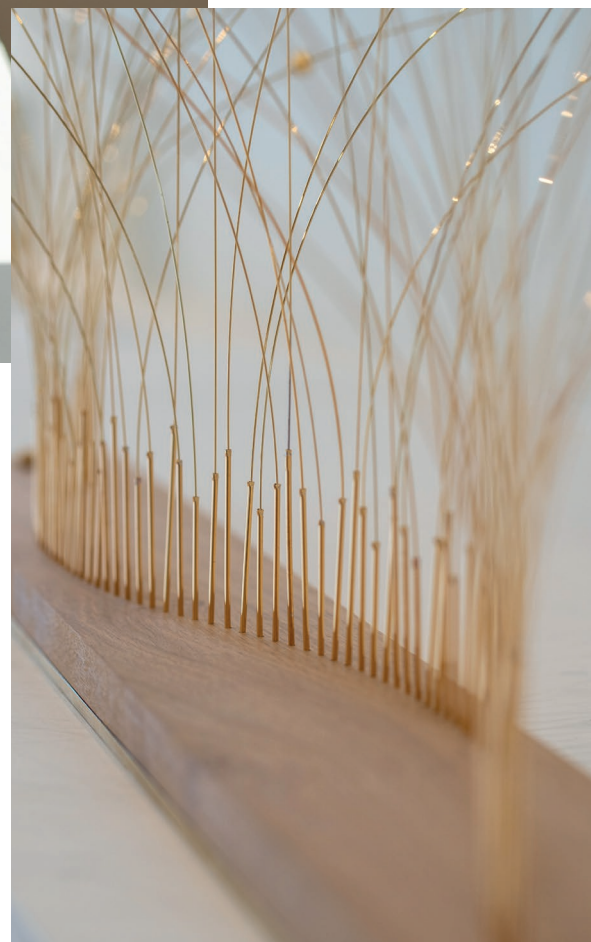


THE WILD GRASS



<https://www.christelsadde.com/en/projet/the-wild-grass/>

Reference : SCU2_13
 Edition : 8 pieces signed and numbered
 Sizes : length of the base 1 m (39 inches)
 x height of the rods 60 cm (24 inches)
 Materials : base in oak and brass
 + rods in plated gold steel
 Weight : 8 kgs (18 lbs)



LIGHTED WALL SCULPTURES



<https://www.christelsadde.com/en/projet/pair-of-lighted-wall-sculptures/>

Reference : APLI1_13 ; APLI2_13
 Edition : 8 pieces signed and numbered
 Sizes : width 50 cm x height 1 m x
 thickness 5 cm
 Materials : Stainless steel rods
 + brass varnished rods
 + leds
 Weight : 10 kgs each



THE PEACOCK SUN



<https://www.christelsadde.com/en/projet/the-peacock-sun/>

Reference : PS-17

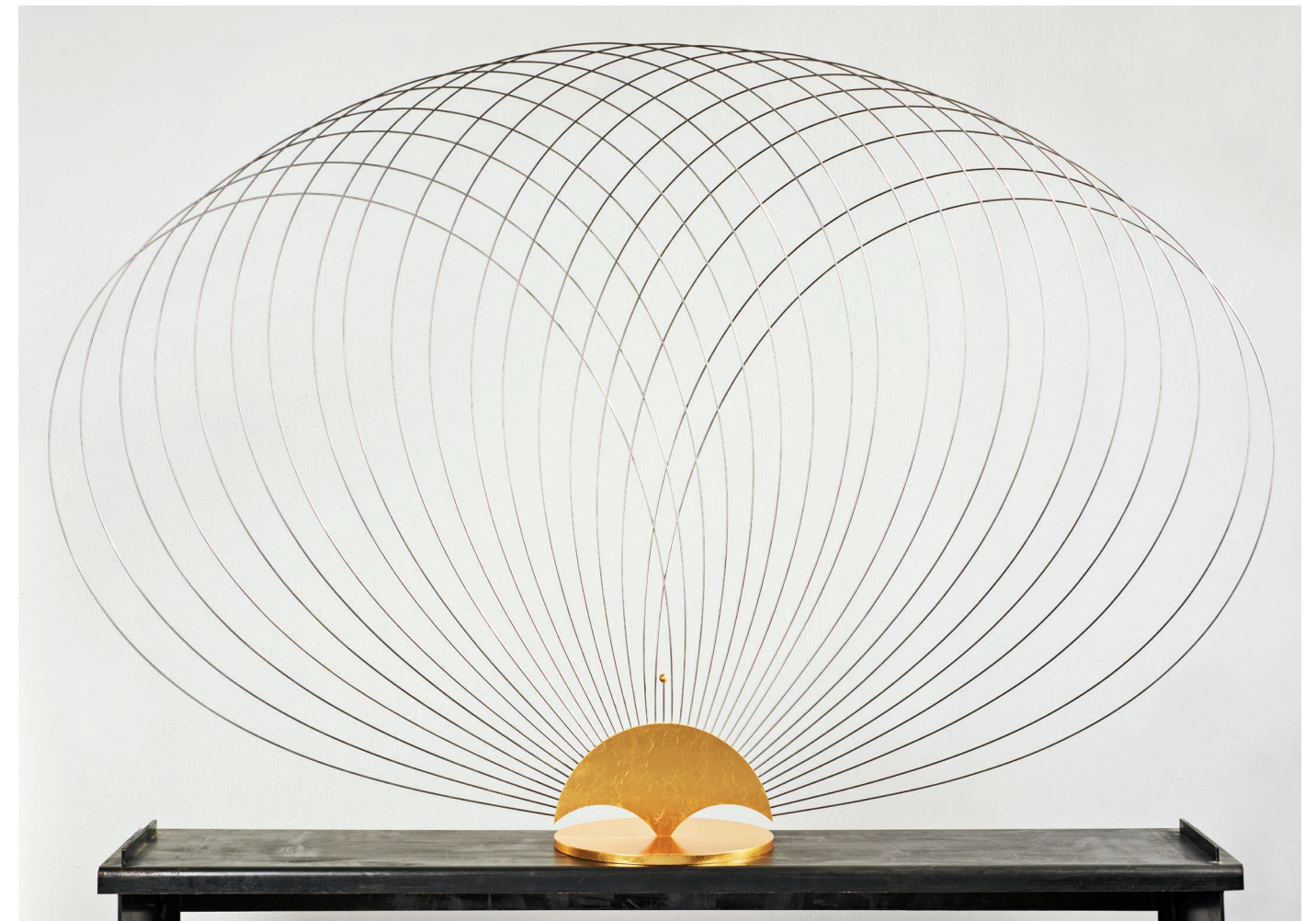
Edition : 8 pieces signed and numbered

Sizes : Diameter of the base : 24 cm (9 in.)
Total diameter : 90 cm (35 in.)

Materials : Stainless steel rods / gold leaf plated base in aluminium.

Weight: 2,8 kgs (6,2 lbs)

THE WATER LILY



<https://www.christelsadde.com/en/projet/the-water-lily/>

Reference : NY-17

Edition : 8 pieces signed and numbered

Sizes : the base : 24 cm (9 inches).
Total length 136 cm (53 in.),
Total height 88 cm (35 in.)

Materials : Stainless steel rods /
gold leaf plated base in aluminium.

Weight: 2,8 kgs (6,2 lbs)



THE CULBUTOS



<https://www.christelsadde.com/en/projet/the-culbutos/>



Reference : C1-15
The Giant «Culbuto»

Edition : 3 pieces signed and numbered

Sizes : diameter 25 cm - 10 inches
 x height 65 cm - 26 inches.
 Base's diameter 38 cm - 15 in.

Materials : matt varnished brass + base in black leather.

Weight : 5.2 kgs (11 lbs)



Reference : C2-15
The family «Culbuto»

Edition : 8 pieces signed and numbered

Sizes : 3 heights 12/17/25 cm
 (5/7/10 inches)
 Base's diameter 38 cm (15 inches)

Materials : matt varnished brass + base in black leather

Weight : 3.4 kgs (7.5 lbs)



Christel Sadde

Ph.or Whatsapp + 33 6 20 67 60 19

contact@christelsadde.com | www.christelsadde.com

Office : 15 rue Cavallotti | 75018 Paris - France

Studio : 4320 route du Veurdre | 58240 Chantenay Saint Imbert - France

Order the book:

<https://www.christelsadde.com/en/the-book/>

